

# ECCL Meeting – February 11, 2022



# Today's Presentation

- Background on the Lee County MPO
- Development of Projects and Funding
- Project Prioritization Process
- Public Involvement and Project Status



# What is the Lee County MPO?

- Transportation Policy Making Board
- Board includes elected representatives (18) from the local jurisdictions and the County Commission
- Based on State (F.S. 335.175) and Federal (Title 23 CFR part 450) laws, the MPO is responsible for establishing a continuing, cooperative and comprehensive transportation planning process for Lee County
- Provide local elected officials input into the planning and implementation of federal and state transportation funds

**LEE COUNTY METROPOLITAN PLANNING ORGANIZATION  
MEMBERSHIP ROSTER 2022**

VOTING MEMBERS: 18

**VOTING MEMBERS**

QUORUM: 10

# MPO Board Members

Lee County Commission P.O. Box 398 Fort Myers, Florida 33902-0398	<b>KEVIN RUANE</b> , *** Commissioner District #1 Office: (239) 533-2224 <a href="mailto:dist1@leegov.com">dist1@leegov.com</a>	<b>CECIL PENDERGRASS</b> , Commissioner District #2 Office: (239) 533-2227 <a href="mailto:dist2@leegov.com">dist2@leegov.com</a>
	<b>RAYMOND SANDELLI</b> , Commissioner District #3 Office: (239) 533-2223 <a href="mailto:dist3@leegov.com">dist3@leegov.com</a>	<b>BRIAN HAMMAN</b> , Commissioner District #4 Office: (239) 533-2226 <a href="mailto:dist4@leegov.com">dist4@leegov.com</a>
	<b>FRANK MANN</b> , Commissioner District #5 Office: (239) 533-2225 <a href="mailto:dist5@leegov.com">dist5@leegov.com</a>	
City of Bonita Springs 9101 Bonita Beach Road Bonita Springs, Florida 34135	<b>FRED FORBES</b> , Councilmember Office: (239) 949-6262 <a href="mailto:fred.forbes@cityofbonitasprings.org">fred.forbes@cityofbonitasprings.org</a>	<b>LAURA CARR</b> , Councilmember Office: (239)-949-6262 <a href="mailto:laura.carr@cityofbonitasprings.org">laura.carr@cityofbonitasprings.org</a>
	<b>Alternate Voting Member</b>	
City of Cape Coral P.O. Box 150027 Cape Coral, Florida 33915-0027	<b>JOHN GUNTER</b> , Mayor Office: (239) 574-0436 <a href="mailto:jgunter@capecoral.gov">jgunter@capecoral.gov</a>	<b>DAN SHEPPARD</b> , Councilmember Office: (239) 574-0436 <a href="mailto:dsheppard@capecoral.gov">dsheppard@capecoral.gov</a>
	<b>KEITH LONG</b> , Councilmember Office: (239) 574-0436 <a href="mailto:klong@capecoral.gov">klong@capecoral.gov</a>	<b>TOM HAYDEN</b> , Councilmember Office: (239) 574-0436 <a href="mailto:thayden@capecoral.gov">thayden@capecoral.gov</a>
	<b>JESSICA COSDEN</b> , Councilmember Office: (239) 574-0436 <a href="mailto:jcosden@capecoral.gov">jcosden@capecoral.gov</a>	<b>Alternate Voting Members</b> Councilmember Nelson Councilmember Tate Councilmember Welsh
City of Fort Myers P.O. Drawer 2217 Fort Myers, Florida 33902-2217	<b>FRED BURSON</b> , Councilmember Office: (239) 321-7005 <a href="mailto:fburson@cityftmyers.com">fburson@cityftmyers.com</a>	<b>TERESA WATKINS BROWN*</b> , Councilmember Office: (239) 321-7001 <a href="mailto:twatkinsbrown@cityftmyers.com">twatkinsbrown@cityftmyers.com</a>
	<b>JOHNNY STREETS Jr.</b> , Councilmember Office: (239) 321-7002 <a href="mailto:jstreets@cityftmyers.com">jstreets@cityftmyers.com</a>	<b>Alternate Voting Member</b> <b>DARLA BETZER BONK</b> , Councilmember Office: (239) 321-7006 <a href="mailto:dbonk@cityftmyers.com">dbonk@cityftmyers.com</a>
Town of Fort Myers Beach P.O. Box 3077 Fort Myers Beach, Florida 33932	<b>RAY MURPHY</b> , Mayor Office: (239) 765-0202 <a href="mailto:raymurphy@fmbgov.com">raymurphy@fmbgov.com</a>	<b>Alternate Voting Member</b> <b>JIM ATTERHOLT</b> , Councilmember Office: (239) 765-0202 <a href="mailto:atterholt@fmbgov.com">atterholt@fmbgov.com</a>
City of Sanibel 800 Dunlop Rd Sanibel, Florida 33957	<b>RICHARD JOHNSON</b> , Vice-Mayor Office: (239) 472-4135 <a href="mailto:Scotty.Kelly@MySanibel.com">Scotty.Kelly@MySanibel.com</a>	<b>Alternate Voting Member</b> <b>MICHAEL MILLER</b> , Councilmember Office: (239) 472-4135 <a href="mailto:Scotty.Kelly@MySanibel.com">Scotty.Kelly@MySanibel.com</a>
Village of Estero 9401 Corkscrew Palms Circle Estero, FL 33928	<b>KATY ERRINGTON</b> , Mayor Office: (239) 292-1237 <a href="mailto:errington@estero-fl.gov">errington@estero-fl.gov</a>	<b>Alternate Voting Member</b> <b>JON MCLAIN</b> , Vice-Mayor Office: (239) 292-1119 <a href="mailto:mclain@estero-fl.gov">mclain@estero-fl.gov</a>

\*Chair \*\*Vice-Chair \*\*\*Treasurer

Revised 01/21/2022

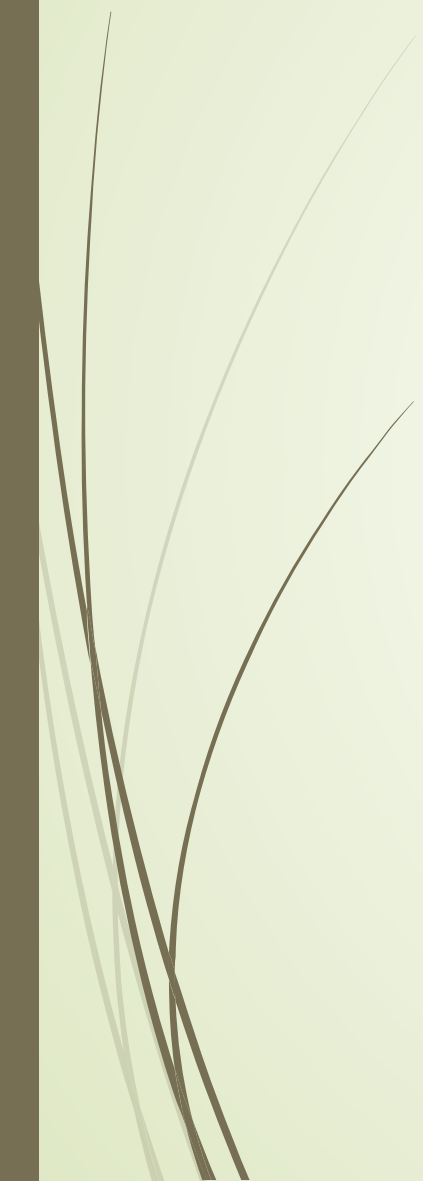



# MPO Committees





# MPO Executive Committee

- ▶ Meets the 2<sup>nd</sup> Wednesday of the month about 6 to 8 times per year in Cape Coral
  - ▶ One member from each jurisdiction represented on the Committee
  - ▶ Addresses administrative and budget issues, items that we can spend more time getting into the detail or items referred to the Committee by the Board
- 



# Projects identified/funded through MPO process - examples

- Roadway improvements – capacity improvements, interchange improvements, bridges, resurfacing
- Bicycle/Pedestrian projects – sidewalks, pathways, bike lanes, ADA improvements
- Congestion Management – intersection improvements, signal interconnection, traffic devices, AV technology, operational funding for Traffic Center
- Safety – Round-a-bouts, lighting, rapid flashing beacons
- Transit – Bus replacements, bus shelters, parts and equipment (capital only)

# MPO Planning Projects - examples

- Bicycle Pedestrian Master Plans/Updates
- Safety studies – lighting, round-a-bout, road safety audits, bicycle/pedestrian safety action plan
- Rail Trail feasibility study
- Evacuation study
- Goods and freight
- Transit area studies





## Funding Sources

### Federal

- Some funding is direct to the urbanized area (SU - \$8.65 million a year and TA - \$765,000 per year) and other funding is for any area/competing with other entities. Additional programs are performance based like safety funds (\$50 million statewide), bridge funding based on condition etc.
- Most of the highway funding comes from gas taxes, though there is an ever increasing amount of general fund covering the transportation bill authorization levels

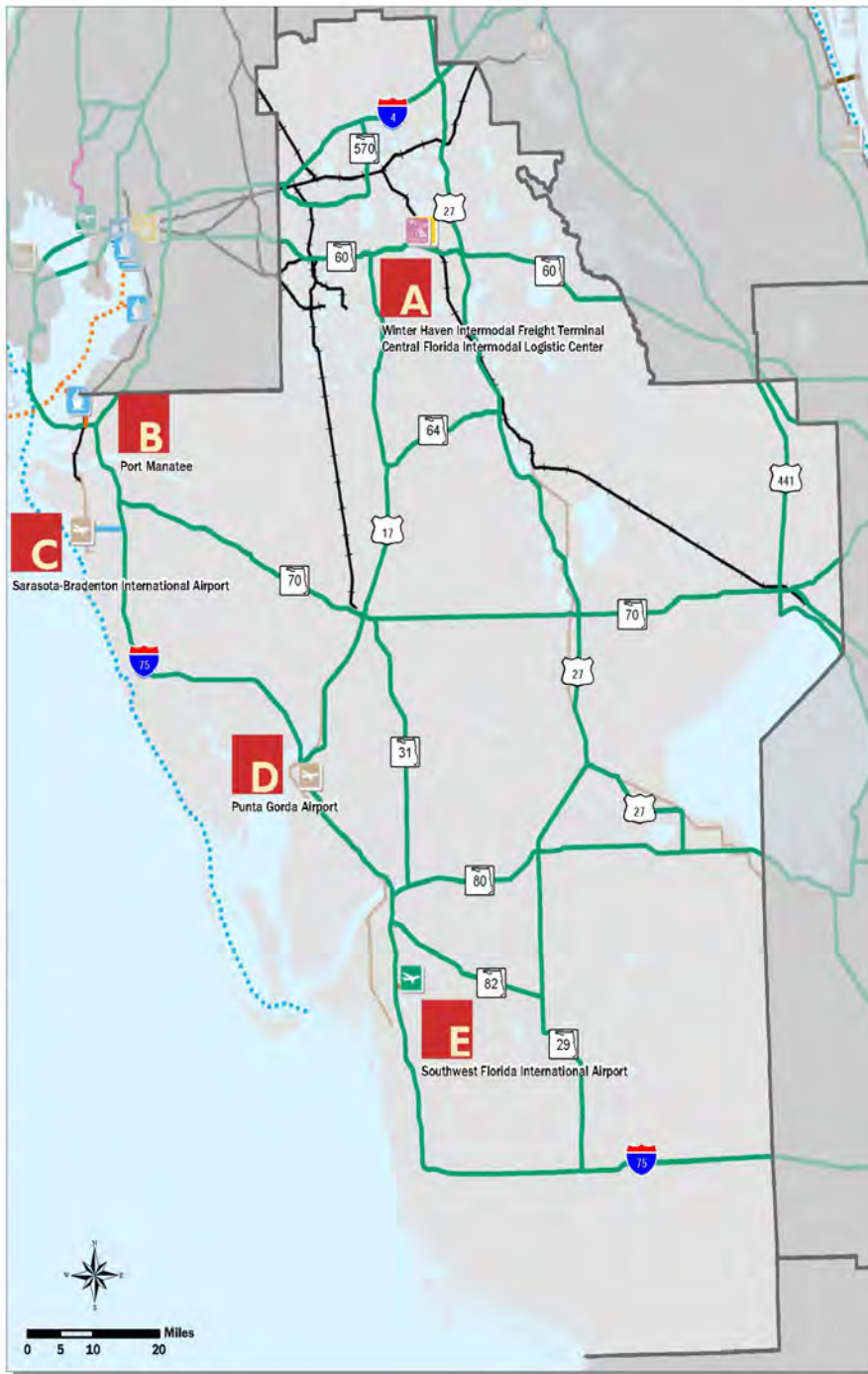


## Funding Sources (Cont.)

### State

- Major capacity funding programs include Strategic Intermodal System(SIS), Aviation, Rail, Intermodal, Seaport, Other Arterial/ROW and Transit. About 74% of the State funding goes to the SIS
- Non capacity programs include Safety, Resurfacing, Bridge, Product Support, Operations and Maintenance
- Certain amount is allocated to Lee County but most of the funding is District or Statewide. Maintenance and Operations accounts for over 50% of the funding

# DISTRICT I overview



## SIS atlas

- Airports**
  - SIS Airport
  - Strategic Growth Airport
- Seaports**
  - SIS Seaport
- Intermodal Logistic Center**
  - Strategic Growth Intermodal Logistic Center
- Freight Rail Terminals**
  - SIS Freight Rail Terminal
- Highway**
  - SIS Highway Corridor
  - SIS Highway Connector
  - Strategic Growth Highway Connector
- Rail**
  - SIS Railway Corridor
  - Strategic Growth Railway Corridor
  - SIS Railway Connector
- Waterways**
  - SIS Waterway
  - SIS Waterway Connector
- Connector Map Insets**
  - A

DESIGNATED SIS AND STRATEGIC GROWTH FACILITIES						
Facility Type	Active and Planned Drop Facilities					Future Facility
	Corridor / Hub		Connector		Military Access Facility	
	SIS	Strategic Growth	SIS	Strategic Growth		
Airports	1	2	-	-	-	-
Seaports	1	-	-	-	-	-
Freight Terminals	1	-	-	-	-	-
Intermodal Logistic Centers	-	1	-	-	-	-
Rail Miles	250	155	1	-	-	-
Highway Miles (Centerline)	882	-	7	8	-	-
Highway Miles (Lane)	3389	-	21	47	-	-



## Funding Sources (Cont.)

### **Local**

- ▶ Each jurisdiction has funding allocated for roadway improvements and maintenance. Funding sources include gas taxes, tolls, impact fees, growth increment funds and general revenue

### **Developer**

- ▶ Agreement to fund specific improvement (example: Babcock with SR 31)



## Funding Sources (Cont.)

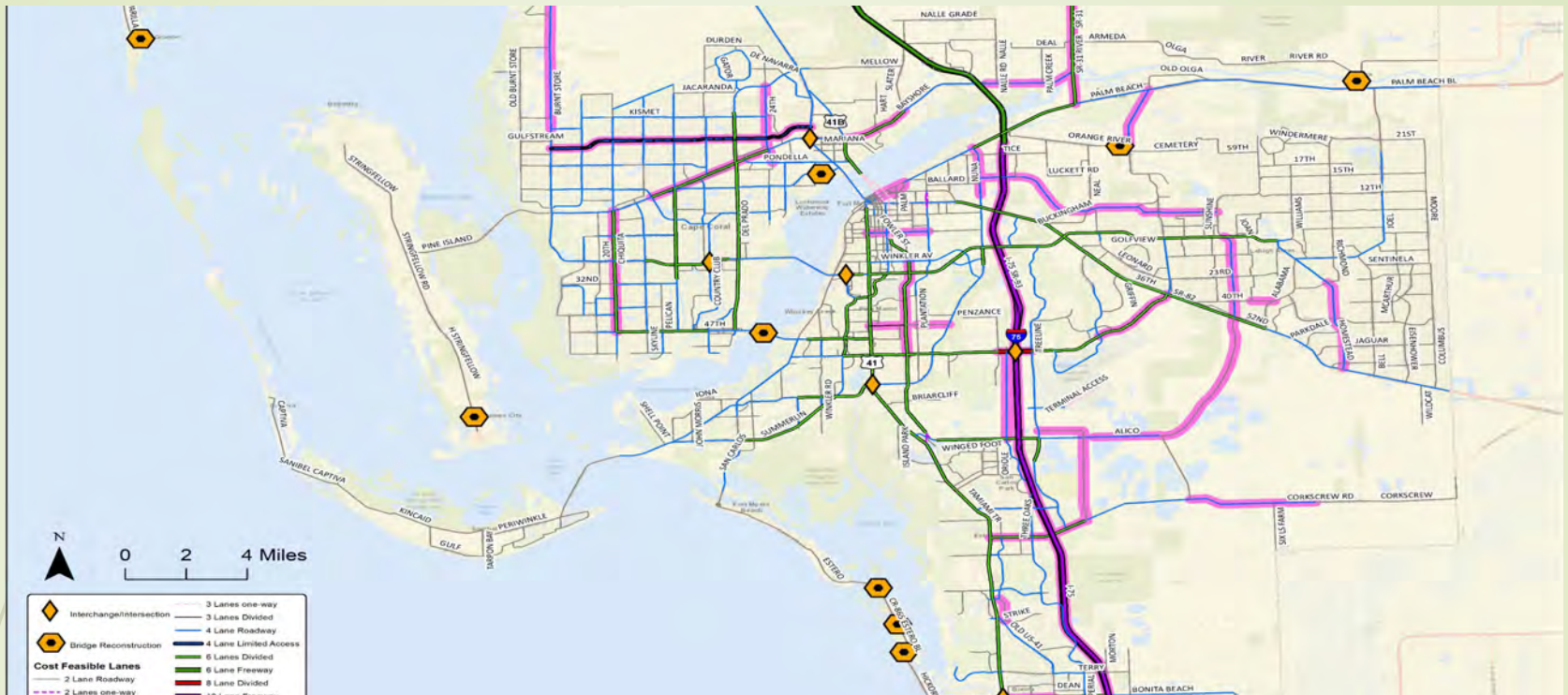
### Grants

- Transportation Regional Incentive Program, County Incentive Grant Program, Safe Routes to School, Shared Use Network Trail, State Infrastructure Bank
- Discretionary funding - the recently passed federal transportation bill includes 21 new competitive grant programs to go along with 13 existing programs

<b>Funding Source</b>	<b>Total</b>
State	\$ 888,200,000
Federal (Major Projects)	\$ 135,300,000
Federal (Bike/Ped, Transit & CMS)	\$ 125,000,000
Local	\$ 2,767,115,000
Transit (Local)	\$ 684,210,000
FDOT SIS Funding	\$ 1,950,289,000
<b>Total</b>	<b>\$ 6,550,114,000</b>



## Project funding in the 2045 Long Range Plan



- Projects Developed for State/Federal funding:*
- LRTP Cost Feasible Plan
  - Projects prioritized in May/June from Plan
  - FDOT develops five-year work program using available funding sources to fund priorities

# How Projects are Identified to be Added (LRTP and/or TIP)

- Widening projects - the Regional Transportation Model shows an existing or future need based on projected available funding
- Intersection/Interchange – intersection studies, operational analysis, safety issues identified
- Bicycle Pedestrian projects mostly come from the local and MPO bicycle pedestrian plans
- Bridges – bridge condition inspections and reports
- Resurfacing – pavement condition

*Note: What project makes sense to seek federal funding*



## Project Development and Environmental Studies

Public Hearings

Final Study Reports and Environmental Document

Community Involvement/Awareness

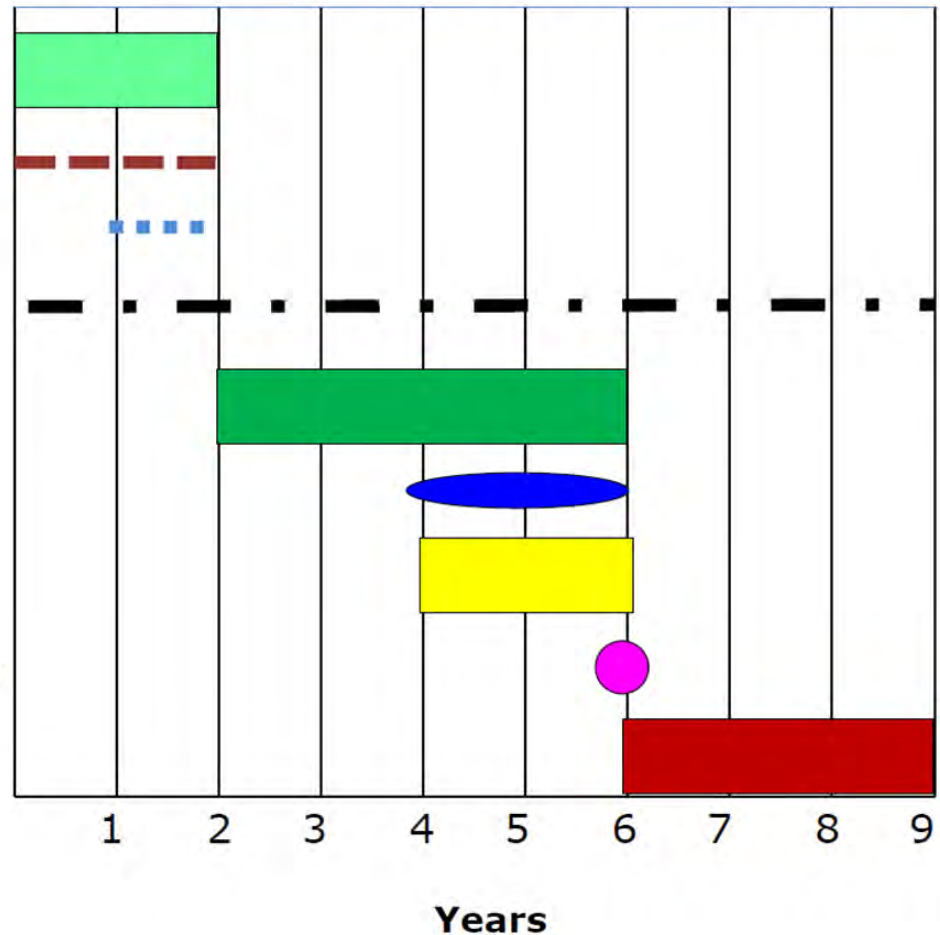
## Develop Design

## Obtain Permits

## Appraise, Acquire and Clear ROW

## Advertise and Let Contract

## Construction



# FDOT Project Timeline

## 2021 FEDERAL AND STATE FUNDED PRIORITIES ADOPTED ON MAY 14, 2021

2021 Priority	2020 Priority	FM #	Project	From	To	Improvement Type	Length (miles)	Next Phase	PDC Estimate (in \$1,000)
1	1	4299601	Partial Funding for County Traffic Operations Center <sup>1</sup>						\$43.5
2	2	1957641	Multi-Modal Enhancement Box <sup>1</sup>						\$3,500
3	3		Big Carlos Bridge Replacement			Bridge	0.4	CST	\$5,000
4			US 41 Caloosahatchee Bridge Pedestrian Infrastructure			Sidewalk	1.0	PE/CST	\$13,800
5	4	4443281	US 41 at Six Mile Cypress Parkway			Intersection	1.0	PE	\$2,000
6	5	4443214	US 41 at Bonita Beach Road			Bypass/Intersection	1.0	PE	\$1,110
7	6	4369281	Burnt Store Road	Van Buren Pkwy	Charlotte Co/1	2L to 4L	5.5	PE	\$8,320
8	7	4313344	SR 730 (Metro Pkwy)	S. of Colonial	Winkler Ave	Partial CFI	1.0	CST	\$37,700
9	8	4313342	SR 730 (Metro Pkwy)	S. of Daniels	N. of Daniels	Partial CFI	0.6	CST	\$20,600
10	9	4313343	SR 730 (Metro Pkwy)	N. of Daniels	S. of Colonial	4L to 6L	2.9	CST	\$28,200
11	10	4419421	SR 31	SR 80	SR 78	2L to 4L	1.4	PE	\$4,000
12	11	4449371	SR 78	I-75	SR 31	2L to 4L	3.3	PE	\$4,500
13	12	4353471	Old US 41	US 41	Bonita Beach Road	Add lanes/reconstruct	2.7	PE	\$1,770
14	13		US 41/SR 78 Displaced Intersection Improvement			Intersection	0.5	PD&E/PE	\$600
15	14	4126363	Countywide ATMS			Phase III Implementation		PE	\$1,200

Notes:



# Citizen Participation

Provide

Provide comments to the MPO on upcoming agenda items ([www.leempo.com](http://www.leempo.com))

Attend

Attend the meetings (Committees, Board etc.) and make comments

Participate in

Participate in the Plan public meetings

Send

Send me an e-mail contact ([dscott@leempo.com](mailto:dscott@leempo.com)) and we will add you to notifications

Come

Come to the project public meetings make comments



## Status Update

Corkscrew Road from Alico Road to Verdana added to Verdana Village – Widening from 2 lanes to 4 lanes added to LRTP Cost Feasible Plan at the January 21, 2022 meeting, Design/ROW 2026-2030 time frame, CST 2031-2035 time frame

Alico Extension from Alico Road to SR 82 – 3 phases, 1<sup>st</sup> phase from Airport Haul Road to Green Meadows at 30% design; 2<sup>nd</sup> phase from Green Meadows to SR 82 data collection and 3<sup>rd</sup> phase intersection at SR 82 and transition with Sunshine Blvd data collection



# Projects Next Five Years

- I-75 at Daniels Parkway - Interchange Improvements
- SR 31 from SR 78 to Cook Brown Road – 2 to 4 lanes
- Big Carlos Bridge – bridge replacement
- Ortiz Avenue from Colonial to Dr. Martin Luther King – 2 to 4 lanes
- Three Oaks Ext. from N. of Alico to Daniels – new 4 lanes
- Corkscrew Road from Bella Terra to Alico – 2 to 4 lanes
- Edison Ave Ext from Arcadia to Ortiz – new 2 lanes

# New Construction Divided LRE Typical Section (FY 2011 – FY 2022 to date)

Total Cost/mi



Questions or  
Comments?

