

APPENDIX A. HYDRAULIC CONDUCTIVITY MAPS

The conductivity maps for geological layers and lenses are shown from Figure A1 to Figure A7. Those values were based on the SWFFS model maps and they were modified during the calibration process. A logarithm color scale was used and maintained through all the graphs. The conductivity used by the computational layers of the model is computed from those maps.

List of Figures

Figure A1. Horizontal conductivity map for the Holocene-Pliocene geological layer.....	2
Figure A2. Vertical conductivity map for the Holocene-Pliocene geological layer.....	3
Figure A3. Conductivity map (horizontal and vertical) for the Bonita Spring Marl Confining Unit geological lens.....	4
Figure A4. Horizontal conductivity map for the Lower Tamiami geological layer.	5
Figure A5. Vertical conductivity map for the Lower Tamiami geological layer.....	6
Figure A6. Conductivity map (horizontal and vertical) for the Upper Peace River Confining Units geological lens.	7
Figure A7. Conductivity map (horizontal and vertical) for the Upper Peace River Sandstone geological layer.	8

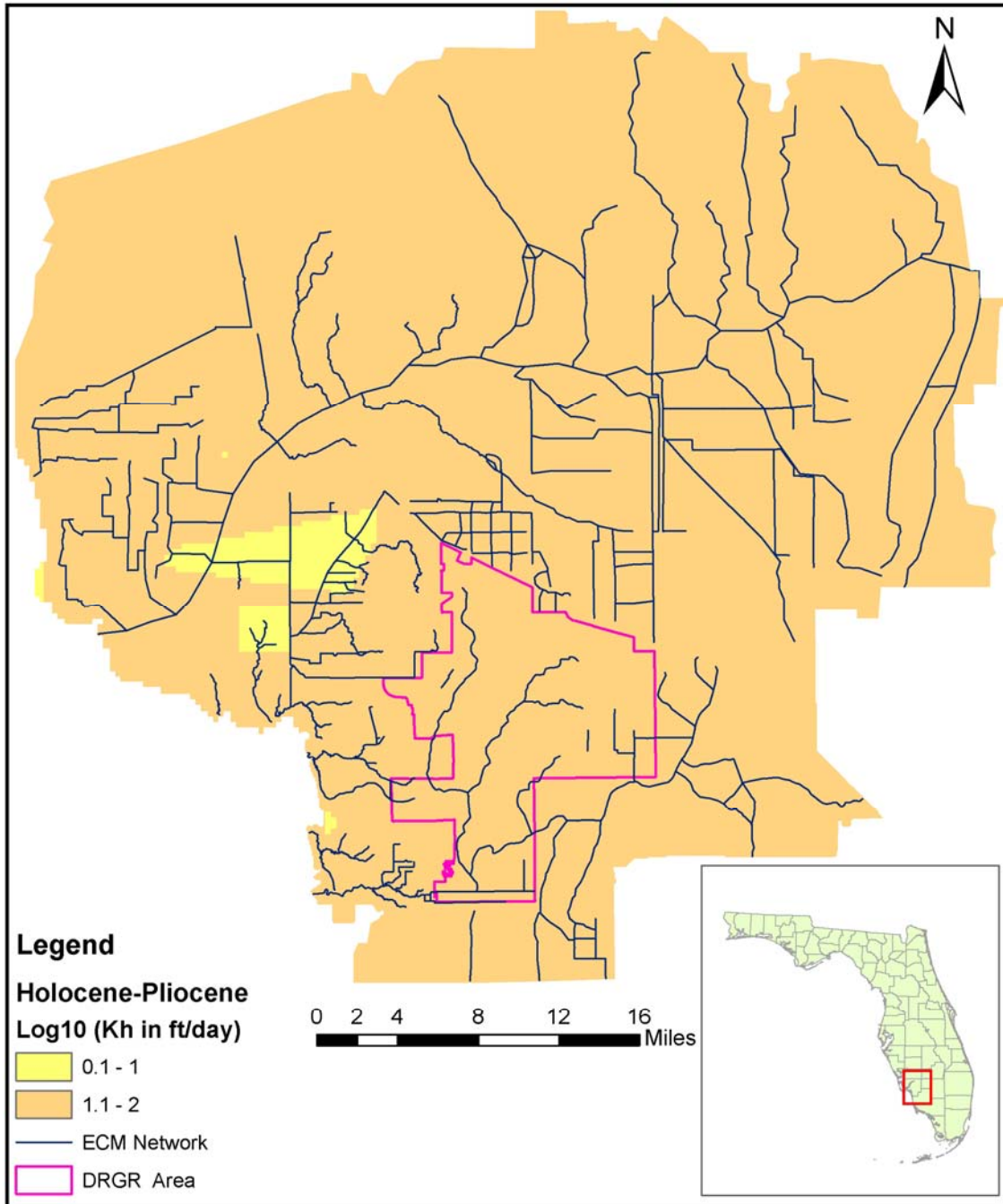


Figure A1. Horizontal conductivity map for the Holocene-Pliocene geological layer.

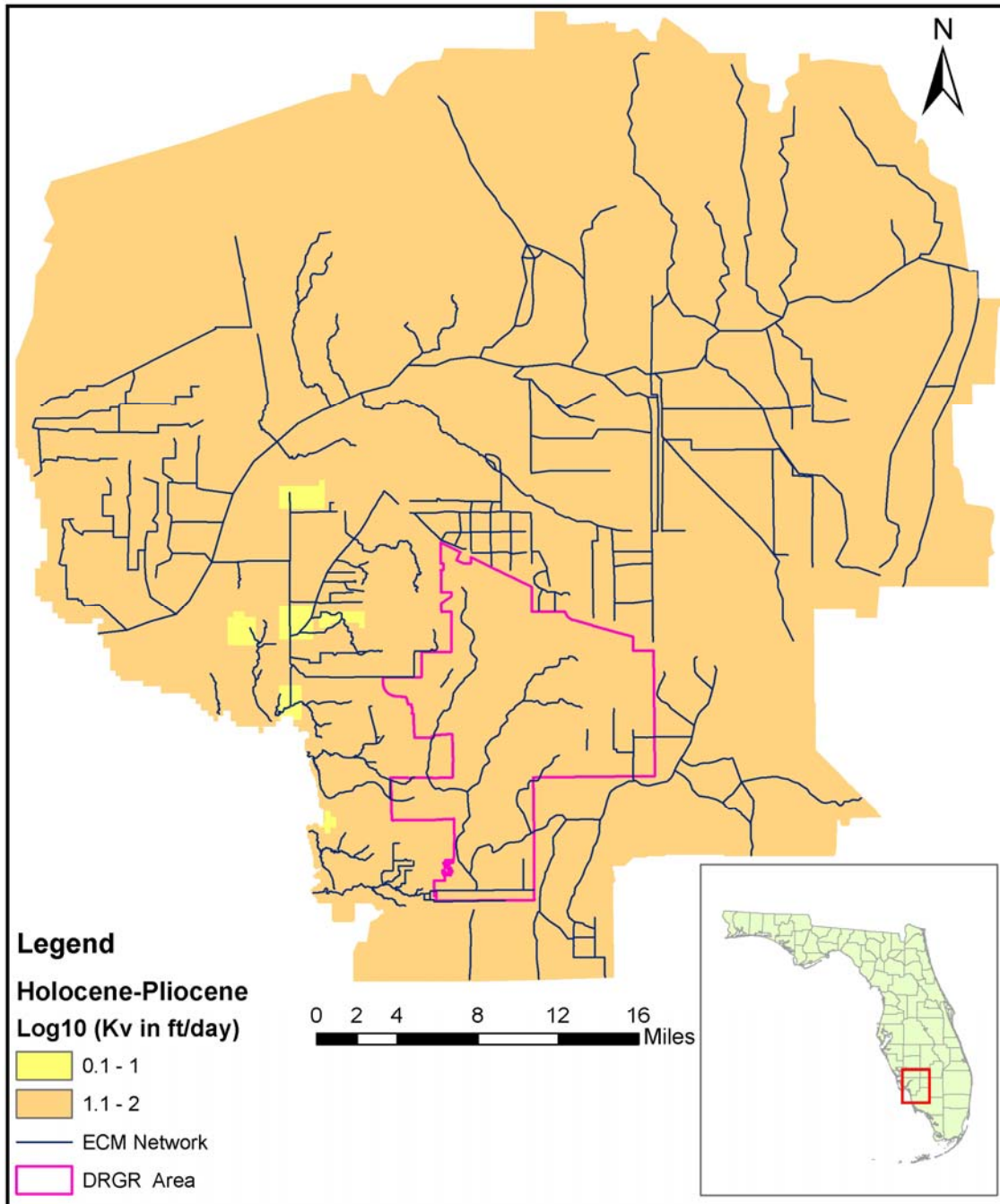


Figure A2. Vertical conductivity map for the Holocene-Pliocene geological layer.

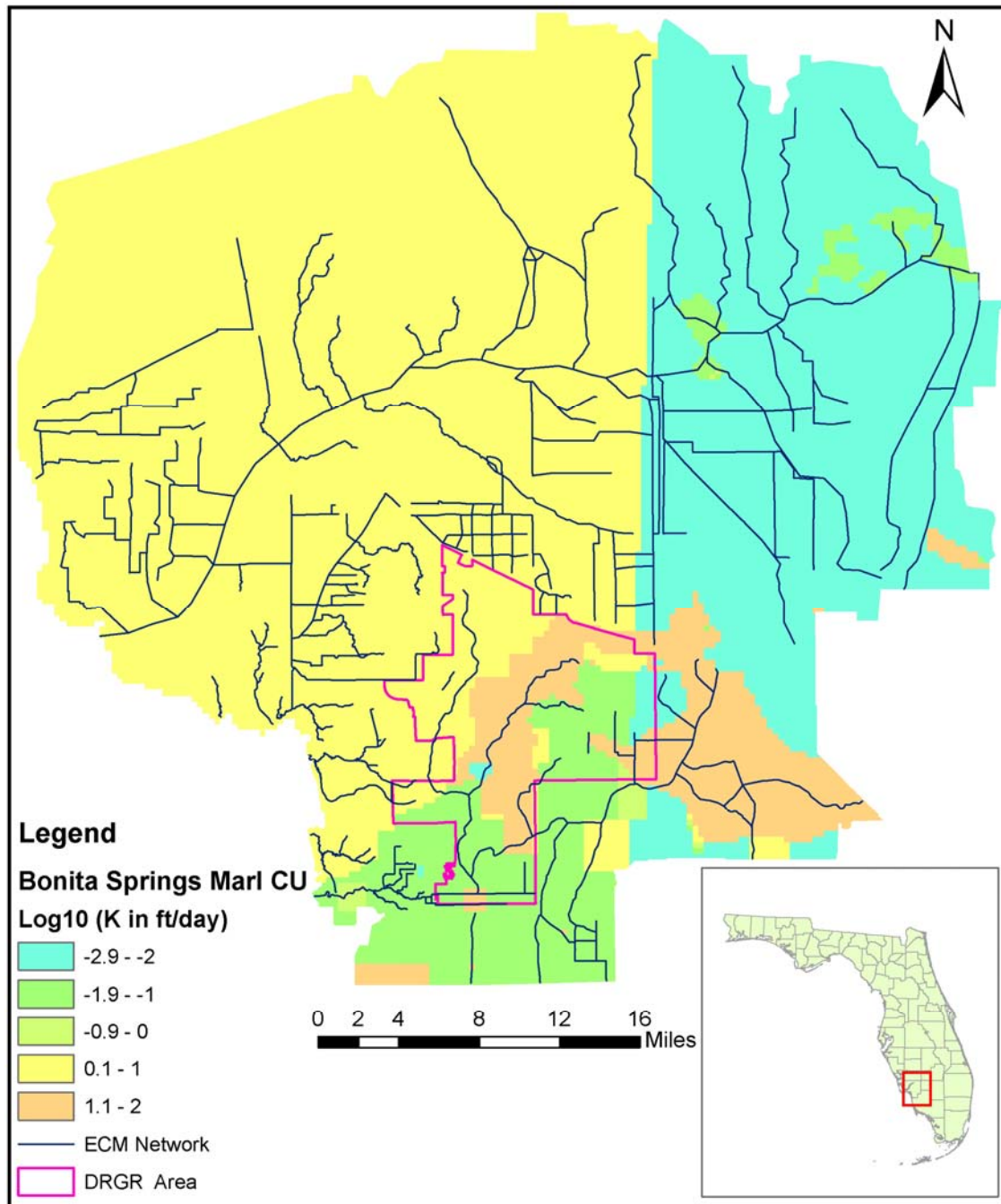


Figure A3. Conductivity map (horizontal and vertical) for the Bonita Spring Marl Confining Unit geological lens.

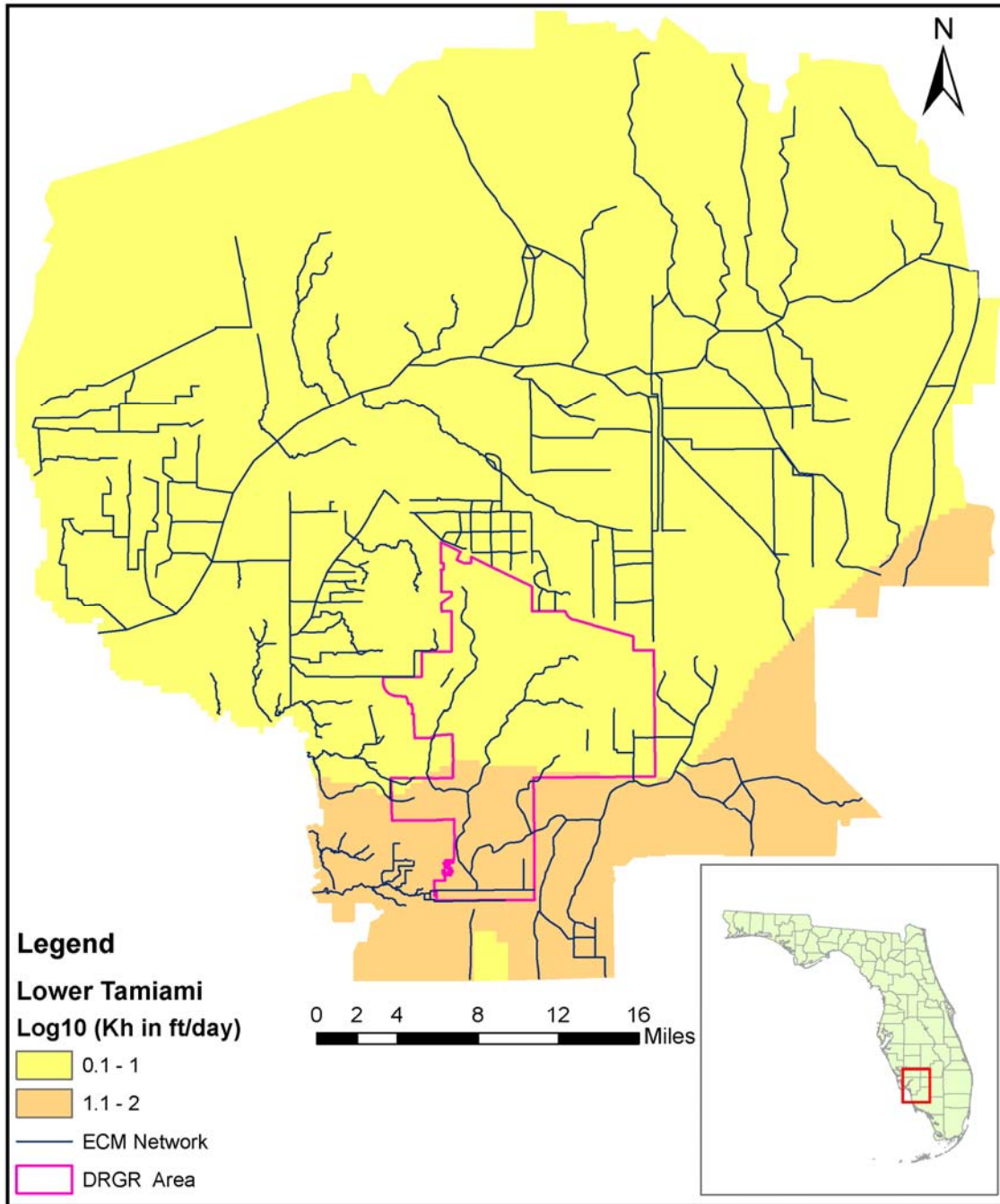


Figure A4. Horizontal conductivity map for the Lower Tamiami geological layer.

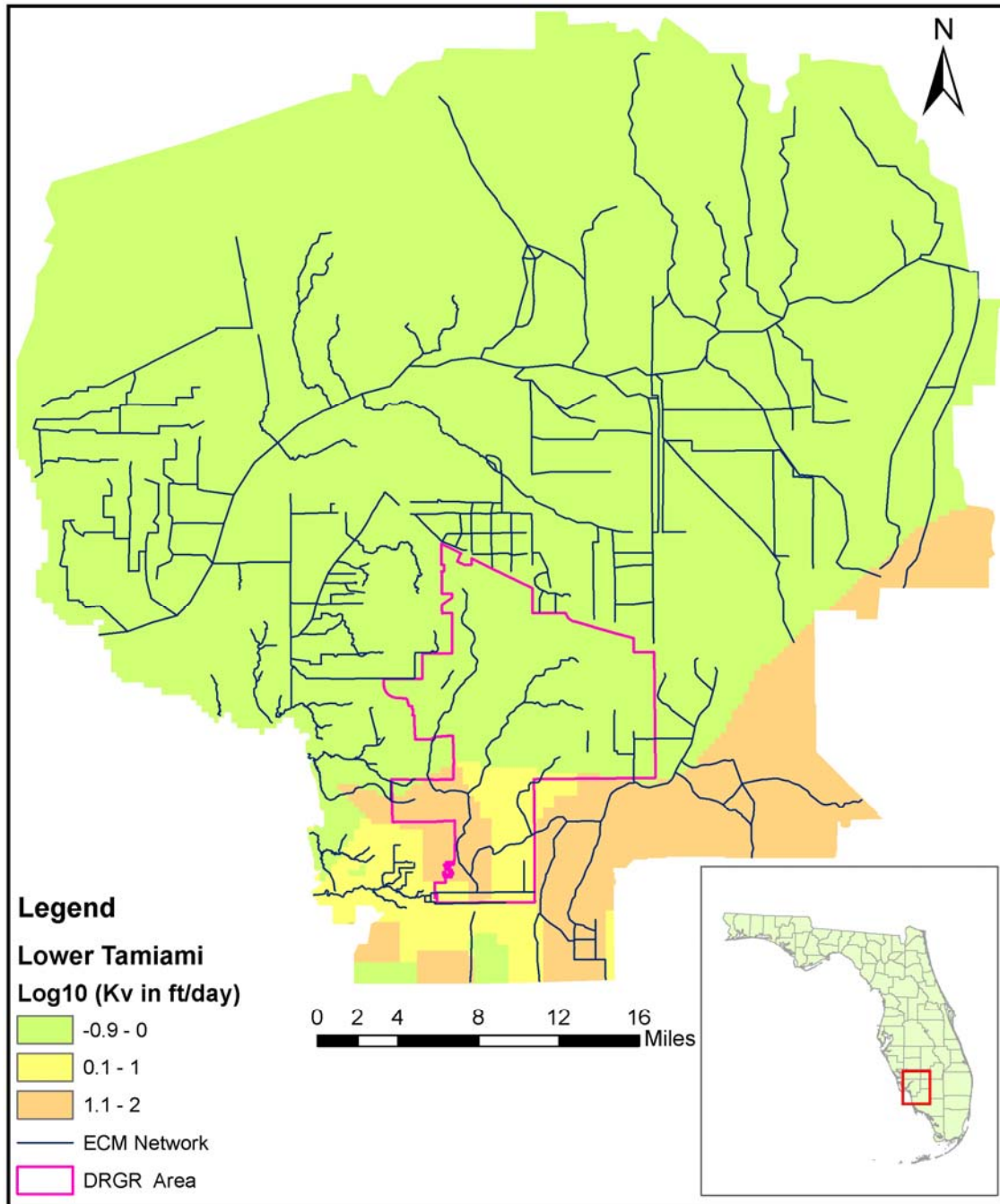


Figure A5. Vertical conductivity map for the Lower Tamiami geological layer.

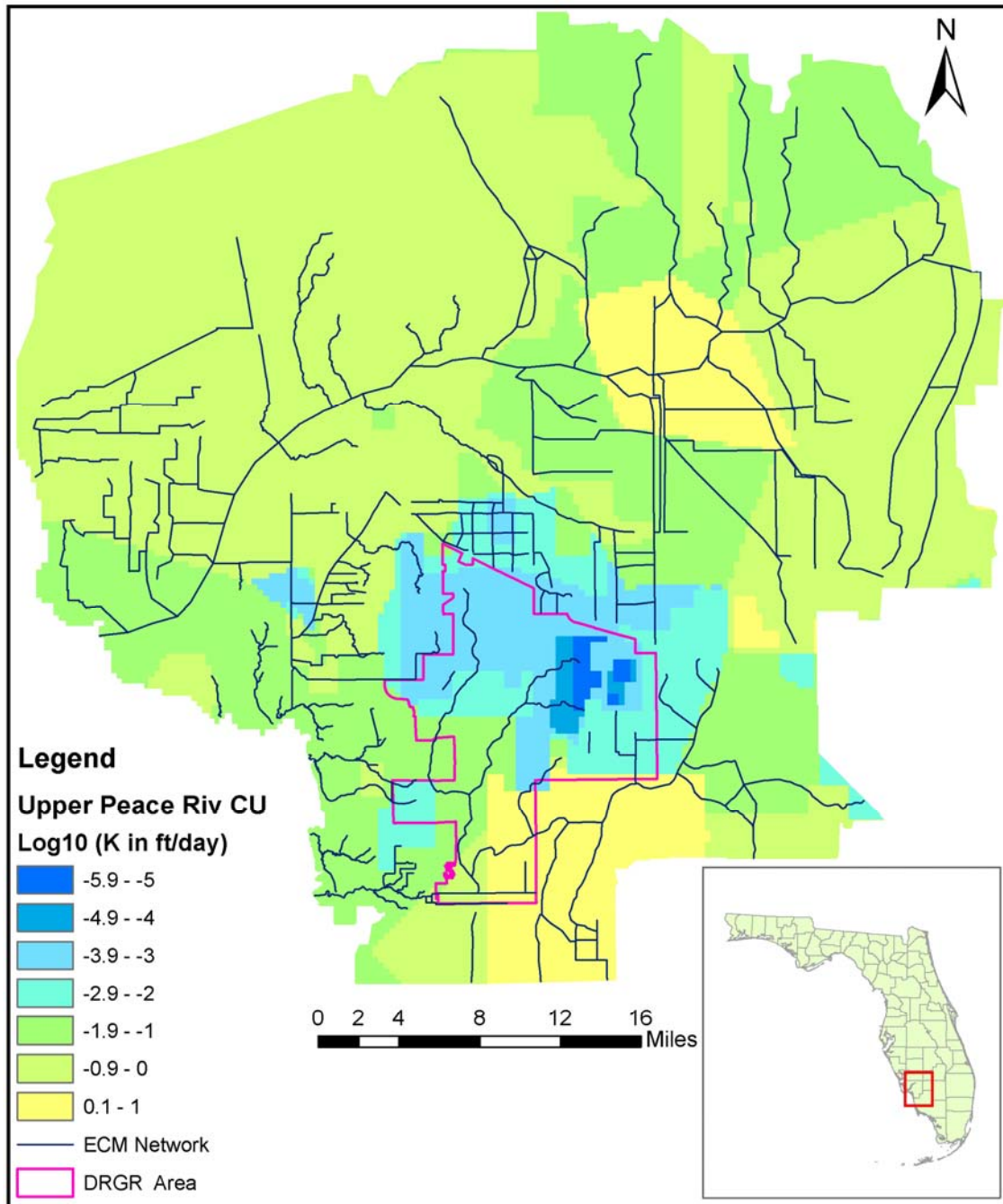


Figure A6. Conductivity map (horizontal and vertical) for the Upper Peace River Confining Units geological lens.

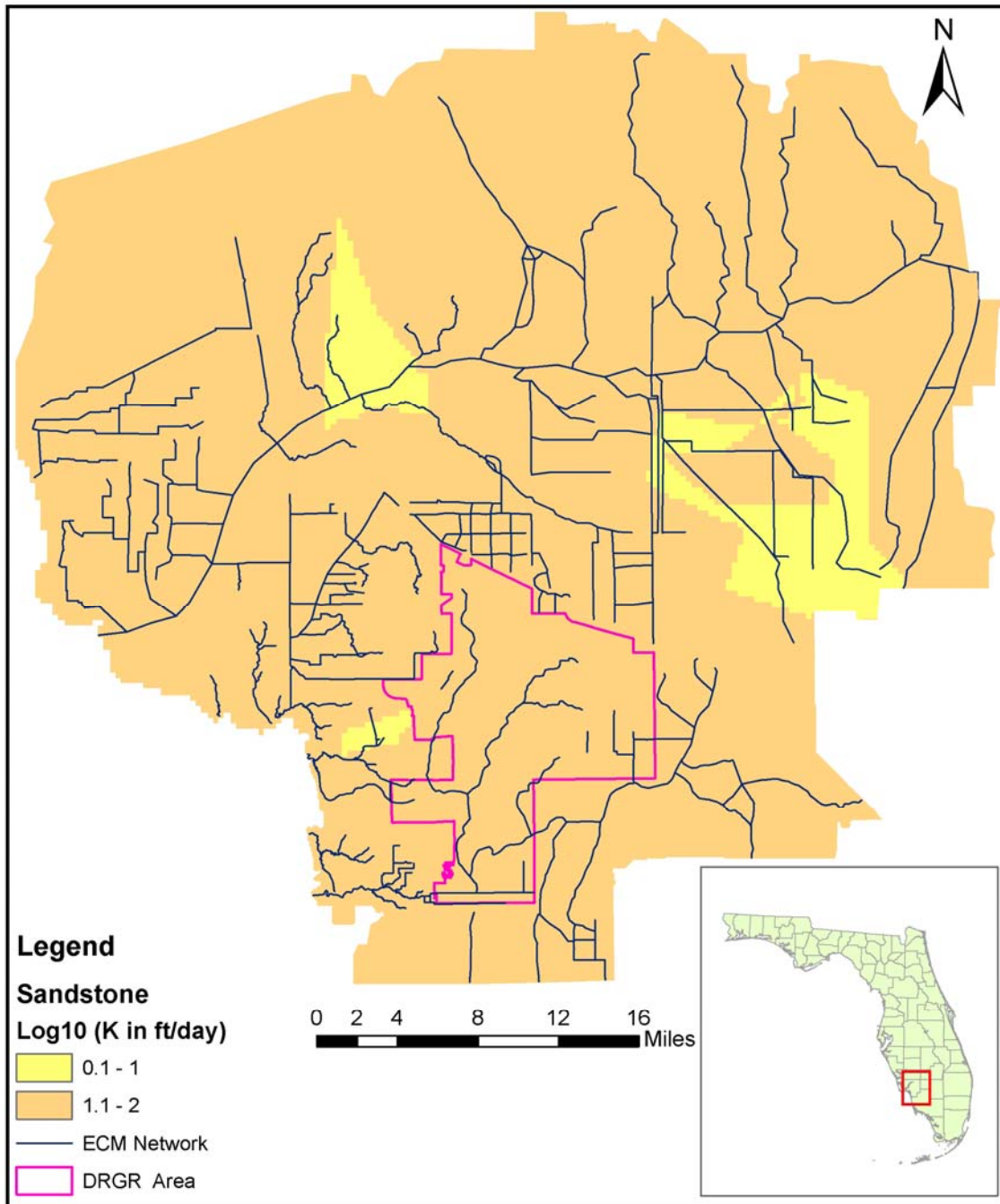


Figure A7. Conductivity map (horizontal and vertical) for the Upper Peace River Sandstone geological layer.